



VOTION[®]

Stainless Steel Bracket System

**BUILT FOR PATIENT COMFORT
AND CLINICAL EFFICIENCY**

VOTION[®]

Stainless Steel Bracket System

The Votion Two-Piece Bracket System utilizes Metal Injection Molding (MIM) technology to achieve extremely complex bracket structures and contours that enhance treatment efficiency.

Votion was created to help doctors achieve improved practice productivity. Three elements were crucial in the design of this system: clear visual cues, effective friction reduction, and high patient comfort.

The result – a low profile bracket with time-saving features such as built-in anti-rotation*, rounded archwire slot contours to prevent archwire notching, and a vertical scribe line that runs the entire length of the bracket.

Low Profile Design
Improved aesthetics and patient comfort

Intelligent Hook Design
Hooks are designed with a 15° angle to reduce interference with gingival tissue

Smooth Facial Contours
For increased patient comfort

Compound Contour Base
Superior fit and greater contact surface area for improved retention

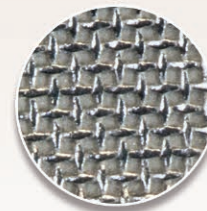
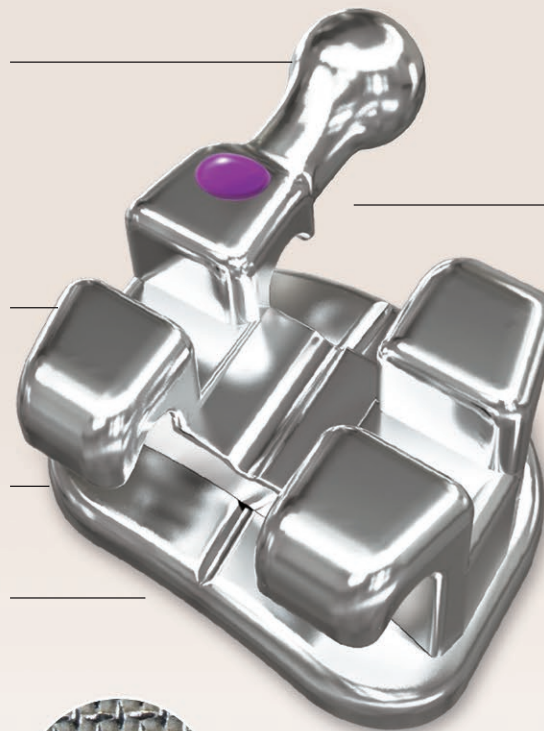
Vertical Scribe Line
Runs entire length of bracket base and pad for easy and more accurate placement on the long axis

***Anti-Rotation**
Ortho Technology's version of the Roth Prescription features built-in anti-rotation in the cuspid and bicuspid bracket archwire slots

Permanent Identification System
With a removable color coded dot and permanently recessed I.D. mark

Ample Under Tie-Wing Area
Provides easy and secure ligation

Rounded Archwire Slot Contours
Mesial and distal slot entry points are rounded to prevent archwire notching when rotations are present and during retraction/protraction procedures



80 Gauge Micro-Etched Mesh Bonding Base
Each base is micro-etched to ensure optimal adhesive properties



Votion®

Ortho Technology's version of the Roth Prescription** with Anti-Rotation†

Patient Kits Description	Item Numbers	
	.018" Slot	.022" Slot
Upper/Lower 5x5	350-91-2000	350-92-2000
Upper/Lower 5x5 Hooks on Cuspids	350-91-2010	350-92-2010
Upper/Lower 5x5 Hooks 3, 4, & 5	350-91-2011	350-92-2011
Upper/Lower 5x5 No Hooks Offset (U/L 4,5)	350-91-2020	350-92-2020
Upper/Lower 5x5 Hooks on 3 Offsets (U/L 4,5)	350-91-2030	350-92-2030
Upper/Lower 5x5 Hooks on 3, 4, 5 Offsets (U/L 4,5)	350-91-2031	350-92-2031

Maxillary Anti-Rotation
 Centrals & Laterals = 0°
 Cuspids = +4°M
 Bicuspids = +2°D

Mandibular Anti-Rotation
 Lower Anterior = 0°
 Cuspids = +2°M
 Bicuspids = +4°D

**The Ortho Technology version of the Roth Rx is not implied to be an exact version of any other system, nor do we claim any endorsement of Dr. Roth.

Votion®

Ortho Technology's version of the McLaughlin, Bennett, & Trevisi Prescription†

Patient Kits Description With Torque on Cuspids	Item Numbers	
	.018" Slot	.022" Slot
Upper/Lower 5x5	350-21-2000	350-22-2000
Upper/Lower 5x5 Hooks on Cuspids	350-21-2010	350-22-2010
Upper/Lower 5x5 Hooks on 3, 4, & 5	350-21-2011	350-22-2011
Upper/Lower 5x5 No Hooks Offset (U/L 4,5)	350-21-2020	350-22-2020
Upper/Lower 5x5 Hooks on 3 Offsets (U/L 4,5)	350-21-2030	350-22-2030
Upper/Lower 5x5 Hooks on 3, 4, 5 Offsets (U/L 4,5)	350-21-2031	350-22-2031

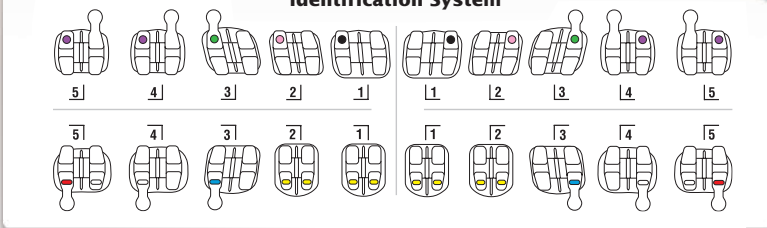
Patient Kits Description Without Torque on Cuspids	Item Numbers	
	.018" Slot	.022" Slot
Upper/Lower 5x5	350-21-2040	350-22-2040
Upper/Lower 5x5 Hooks on Cuspids	350-21-2050	350-22-2050
Upper/Lower 5x5 Hooks on 3, 4, & 5	350-21-2051	350-22-2051
Upper/Lower 5x5 No Hooks Offset (U/L 4,5)	350-21-2060	350-22-2060
Upper/Lower 5x5 Hooks on 3 Offsets (U/L 4,5)	350-21-2061	350-22-2061
Upper/Lower 5x5 Hooks on 3, 4, 5 Offsets (U/L 4,5)	350-21-2062	350-22-2062

†The Ortho Technology version of the McLaughlin, Bennett, & Trevisi Rx is not implied to be an exact version of any other system, nor do we claim any endorsement of the respective doctors.

Votion Single Patient Kit for Chairside Presentation



Identification System



Votion Brackets are designed for use with
Votion Bondable Buccal Tubes

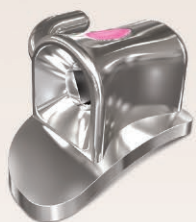


Votion®
Bondable Buccal Tubes
Single Non-Convertible

Quadrant	Slot Torque	Distal Offset	Item Numbers	
			.018" Slot	.022" Slot
(R) Upper Right	-14°	14'	351-11-1620	351-12-1620
(R) Upper Left	-14°	14'	351-11-2620	351-12-2620
(R) Lower Right	-25°	4'	351-11-3620	351-12-3620
(R) Lower Left	-25°	4'	351-11-4620	351-12-4620
(M) Upper Right	-14°	10'	351-21-1620	351-22-1620
(M) Upper Left	-14°	10'	351-21-2620	351-22-2620
(M) Lower Right	-20°	0'	351-21-3620	351-22-3620
(M) Lower Left	-20°	0'	351-21-4620	351-22-4620

(R) The Ortho Technology version of the Roth Rx**

(M) The Ortho Technology version of the McLaughlin, Bennett, & Trevisi Rx†



Votion®
Mini Bondable Buccal Tubes

Quadrant	Slot Torque	Distal Offset	Item Numbers	
			.018" Slot	.022" Slot
(R) Upper Right	-10°	0'	352-11-1620	352-12-1620
(R) Upper Left	-10°	0'	352-11-2620	352-12-2620
(R) Lower Right	-25°	0'	352-11-3620	352-12-3620
(R) Lower Left	-25°	0'	352-11-4620	352-12-4620
(M) Upper Right	-14°	10'	352-21-1620	352-22-1620
(M) Upper Left	-14°	10'	352-21-2620	352-22-2620
(M) Lower Right	-10°	0'	352-21-3620	352-22-3620
(M) Lower Left	-10°	0'	352-21-4620	352-22-4620

(R) The Ortho Technology version of the Roth Rx**

(M) The Ortho Technology version of the McLaughlin, Bennett, & Trevisi Rx†





VOTION[®]

Stainless Steel Bracket System

**BUILT FOR PATIENT COMFORT
AND CLINICAL EFFICIENCY**

LOW PROFILE DESIGN

ANTI-ROTATION*

INTELLIGENT HOOK DESIGN

AMPLE UNDER TIE-WING AREA

**80 GAUGE MICRO-ETCHED
MESH BONDING BASE**



VOTION® MARKETING MATERIALS

Let Us Help You Generate Enhanced Patient Interest!



Votion Patient Consultation Center
Includes 25 full color trifold brochures
Item #: S500
(Stand design may vary)



Votion Ideal Occlusion Typodont
Item #: G50-122



Votion Patient Brochures
1 refill pack of 25 full color trifold brochures
Item #: B-00740



Votion Wall Poster
18" x 24" Full color
Item #: L-00742



1 Southern Court, West Columbia, SC 29169 USA
US: 1.800.999.3161 | Outside US: 1.813.501.1650
Visit OrthoTechnology.com/Votion for more information

