

# Lotus|DS PLUS<sup>®</sup>

Self-Ligating Bracket System

DUAL SYSTEM,  
UNLIMITED OPTIONS  
FOR  
HYPER EFFICIENT  
ORTHODONTICS

Lotus Plus DS can transform your  
practice efficiency and profitability.



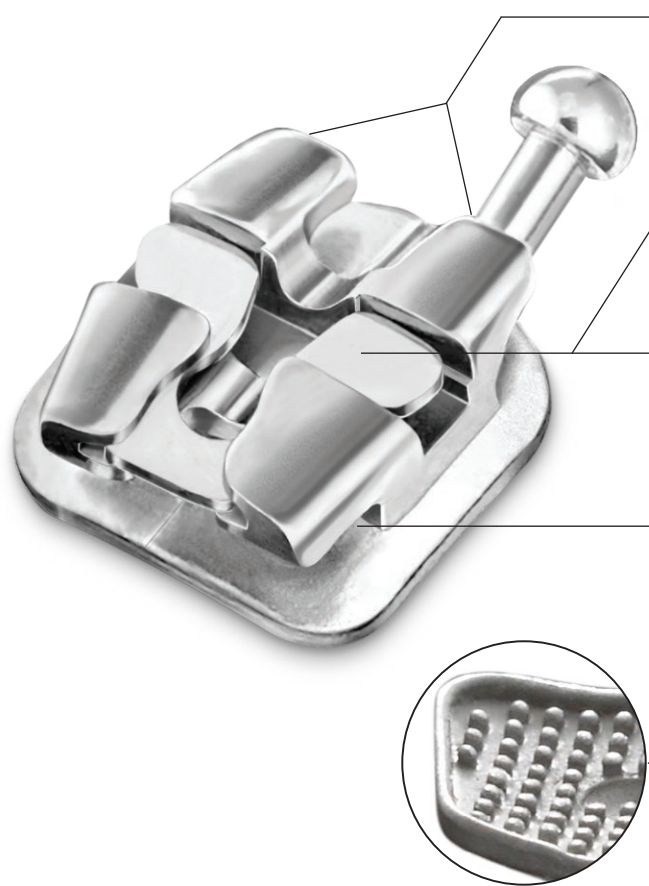
PASSIVE



INTERACTIVE



### SELF-LIGATING BRACKET SYSTEM



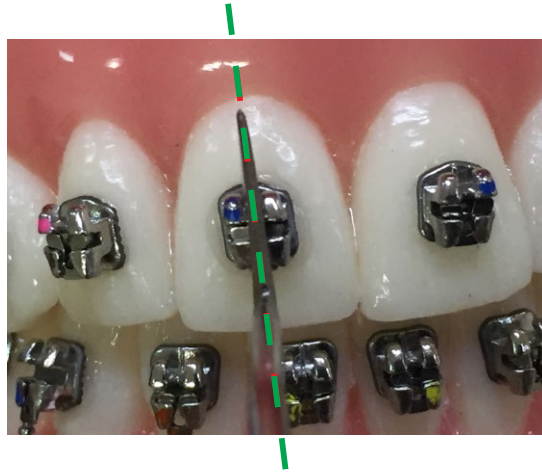
- **Familiar Mini-Twin “True Straight Wire” Design**  
With a deep v-channel and vertical scribe line for accurate placement
- **Superior Planar Thermal Nickel-Titanium Clip**  
With flexible independent tabs for reduced friction and improved rotational control
- **Easy-Opening Non-Removable Clip**  
Opens using light force to prevent bracket bond failure and provide comfortable adjustments
- **Smooth Tie-Wing Undercuts**  
For patient comfort and secure colored ligation if desired
- **Lowest Possible Profile**  
With rounded facial contours for maximum patient comfort and aesthetic appearance
- **Micro-Etched Base**  
With mushroom shaped pylons for 40% higher bond strength than a standard mesh pad
- **One-Piece Bracket**  
Made from 17-4 Stainless Steel

# LOW PROFILE, PATIENT COMFORT



Outstanding Patient Comfort - One of the Lowest Profiles in the Industry while still maintaining straight wire mechanics

# EASY TO ADD TO YOUR PRACTICE



Lotus Plus DS aligned along the vertical axis using a flat tipped hand instrument.

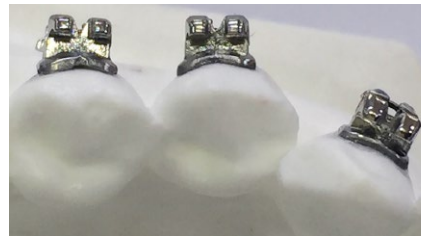
Easy Bracket Placement,  
Familiar Twin Wing Design

# 40% HIGHER BOND STRENGTH THAN STANDARD 80 GAUGE MESH BASES

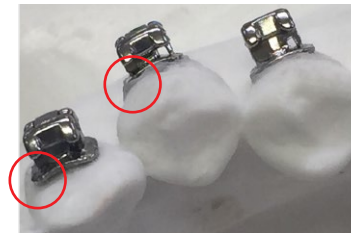


Mushroom Shaped Pylons  
For Greater Surface Area

- **Compound Contoured  
Tooth-Specific Bases**
- **Accurate Fit**

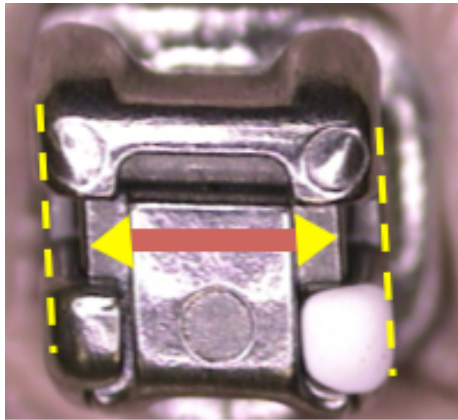


Lotus Plus DS



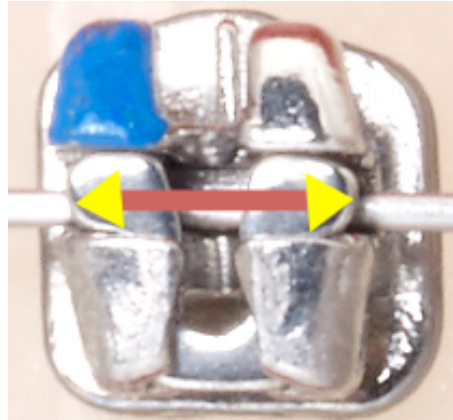
Damon Q

# ARE YOUR BRACKET DOORS CAUSING FRICTION?



Damon Q

Rigid doors can cause archwire nicking, and don't cover the entire width of the bracket slot.



Lotus Plus DS

Lotus Plus DS Features a Thermal Nickel-Titanium door that runs the entire width of the bracket slot, and has separate tabs for improved rotational control.

Thermal  
Nickel-Titanium  
Doors

*"At the first visit the results were obvious, the basic leveling and aligning were well under way, without any patient discomfort."*

**Dr. Enis Güray  
Orthodontist**

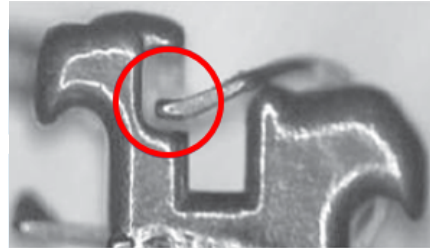
# THERMAL NICKEL-TITANIUM CLIPS

## Chromium Cobalt Clips are Prone to Deforming



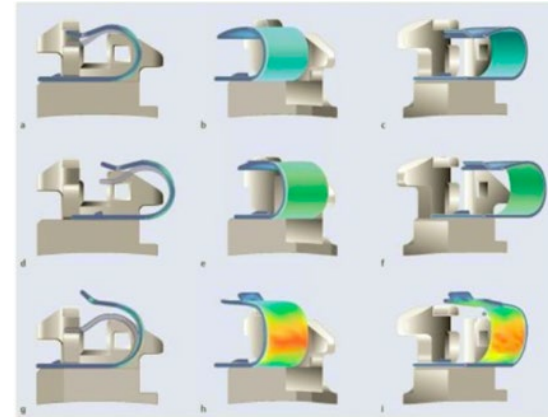
Lotus Plus DS Clip after 10 consecutive tests of 1.5 lbs of opening force with no deformation.

- **Unique Planar Design**
- **Made from Thermal Nickel-Titanium**



In-Ovation/Empower Chromium Cobalt C Clip deformed after 10 consecutive tests of 1.5 lbs of opening force.

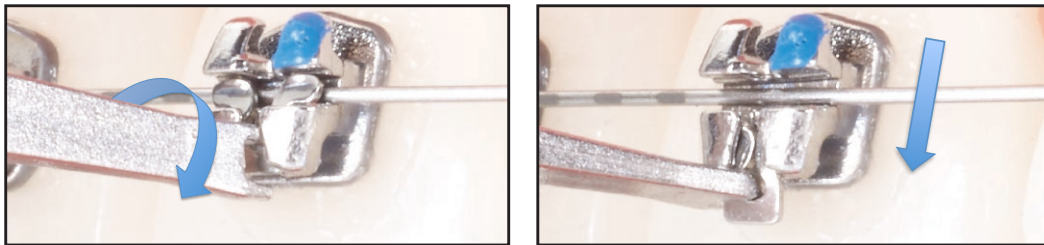
- **C Clip Design Prone to Deformation**
- **Made from Chromium Cobalt**



- **Color change from green to red indicates where C clip will stress during treatment**

# TOOLS & RESOURCES

Lotus Plus DS Turn Key Instrument  
Opening Method



- **Lever Action Easily Opens Clips**
- **Comfortable for Patients**



Lotus DS Turn Key Instrument



- **Opening Videos and More**



# CLINICAL BENEFITS - CASE STUDY



14 MONTHS

4 SETS OF ARCHWIRES



6 APPOINTMENTS



# BASIC ARCHWIRE SEQUENCE

Phase I Round Archwires	Duration	Objective
.013", or .014" <b>TruFlex™</b> Thermal Nickel Titanium Universal Form	• 10 Weeks	• Cases with severe crowding
.018" <b>TruFlex™</b> Thermal Nickel Titanium Universal Form	• 10 Weeks	<ul style="list-style-type: none"> <li>• Level and align</li> <li>• Begin arch development</li> <li>• Solve 90% of rotations</li> </ul>
Phase II Rectangular Archwires	Duration	Objective
.014" x .025" <b>TruFlex™</b> Thermal Nickel Titanium Universal Form	• 10-20 Weeks	<ul style="list-style-type: none"> <li>• Complete leveling and alignment</li> <li>• Resolve remaining rotations</li> <li>• Start control of torque</li> <li>• Consolidation of the anterior spaces</li> <li>• Continue arch development without expanders or quad-helix</li> </ul>
.018" x .025" <b>TruFlex™</b> Thermal Nickel Titanium Universal Form	• 4-6 Weeks	<ul style="list-style-type: none"> <li>• Fine tune torque control</li> <li>• Continue development of the arch</li> </ul>
Phase III Mechanics at Work	Duration	Objective
.019" x .025" <b>TruForce™</b> Stainless Steel Universal Form	• 20-30 Weeks	<ul style="list-style-type: none"> <li>• Finish torque control</li> <li>• Consolidation of posterior spaces</li> <li>• Adjustments to buccal, lingual, anterior, and posterior</li> <li>• Coordination of the arch form</li> </ul>
Phase IV Finishing	Duration	Objective
.019" x .025" <b>TruForce™</b> Stainless Steel Universal Form	• 10 Weeks	• Specific detailing of patient arch form
.019" x .025" <b>BetaForce™</b> Beta Titanium Universal Form		

# PASSIVE & INTERACTIVE PRESCRIPTIONS

## Damon® Low Torque Prescription

### Single Patient Kits Description

Upper/Lower 5x5 No Hooks	.022" Slot
Upper/Lower 5x5 Hooks on Cuspids	.022" Slot
Upper/Lower 5x5 Hooks on 3, 4, & 5	.022" Slot

## Damon® Standard Torque Prescription

### Single Patient Kits Description

Upper/Lower 5x5 No Hooks	.022" Slot
Upper/Lower 5x5 Hooks on Cuspids	.022" Slot
Upper/Lower 5x5 Hooks on 3, 4, & 5	.022" Slot

## Damon® Super Torque Prescription

### Patient Kits

Upper/Lower 5x5 No Hooks	.022" Slot
Upper/Lower 5x5 Hooks on Cuspids	.022" Slot
Upper/Lower 5x5 Hooks on 3, 4, & 5	.022" Slot

Ortho Technology's Version of the Prescriptions Above, And are not Implied to be an Exact Version of Any Other System

## McLaughlin, Bennett, & Trevisi Prescription

### Single Patient Kits Description

Upper/Lower 5x5 No Hooks	.018" Slot	.022" Slot
Upper/Lower 5x5 Hooks on Cuspids	.018" Slot	.022" Slot
Upper/Lower 5x5 Hooks 3, 4, & 5	.018" Slot	.022" Slot

## Roth Prescription

### Single Patient Kits Description

Upper/Lower 5x5 No Hooks	.018" Slot	.022" Slot
Upper/Lower 5x5 Hooks on Cuspids	.018" Slot	.022" Slot
Upper/Lower 5x5 Hooks 3, 4, & 5	.018" Slot	.022" Slot

## ALSO AVAILABLE

### Individual Brackets

10 brackets per pack

